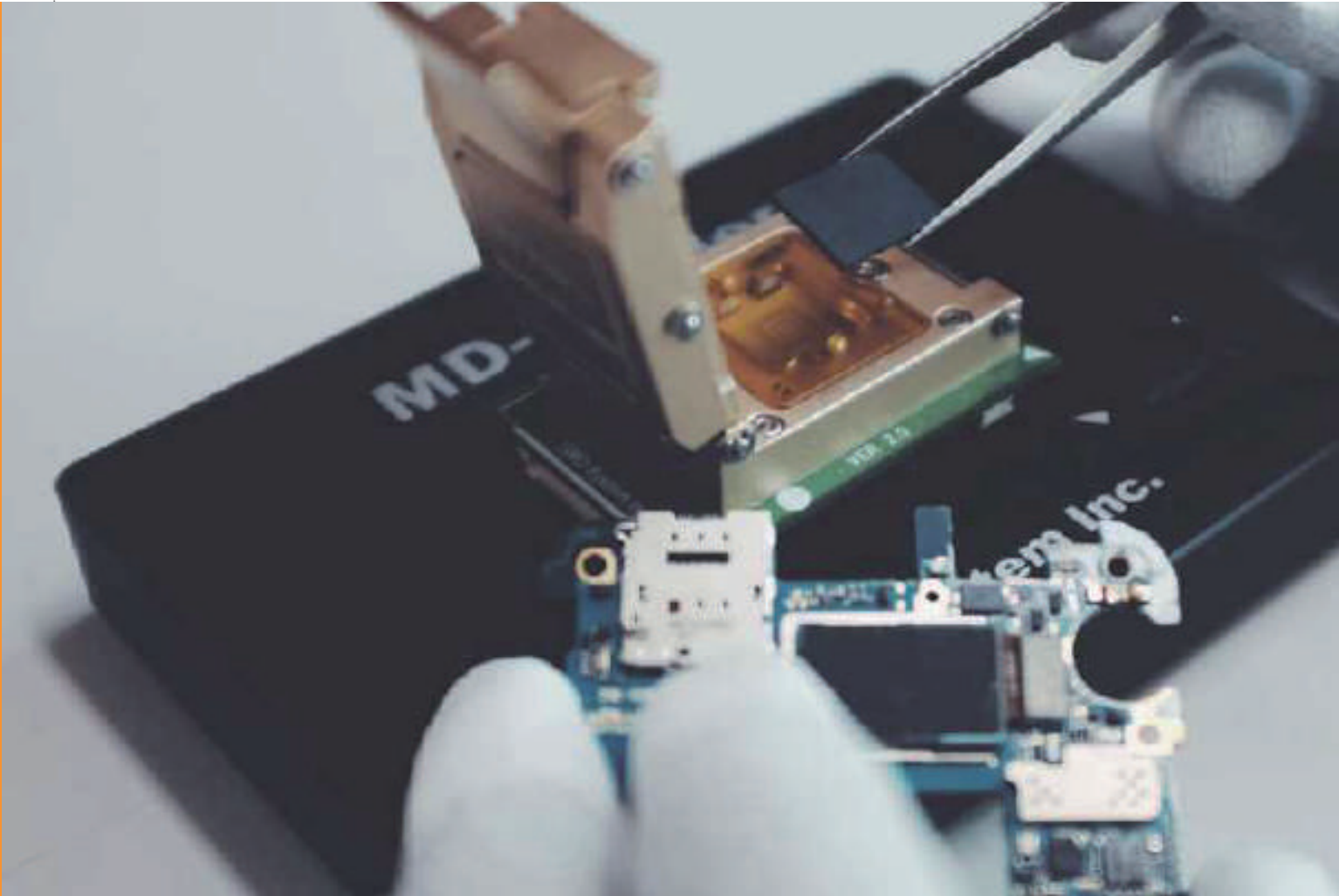


MD-READER

Forensic Hardware Tool that Extracts data directly from a detached memory pulled from the motherboard

MD-READER is the forensic hardware for extracting data directly from the flash memory detached from the mainboard of digital device. The detached flash memory needs to be mounted into eMMC/eMCP memory sockets bundled with MD-READER. Then, the data extraction can be done under the assurance of write protection and evidence integrity at Chip-off menu in MD-NEXT.



System Requirements

CPU	Samsung S5PV210
RAM	DDR256M
Memory	NAND 512M
Input Voltage	DC 5V
Size	110x140x35mm

Product Components

- MD-READER Hardware 1 EA
- Sockets of eMMC or eMCP 5 EA (5+ sockets as Option)
- Universal SD memory card socket 1 EA
- Power adapter 1 EA
- USB cable 1 EA
- Monthly update license for new models
- Warranty: 1 Year

› Product Specification

Data Extraction from Chip-off Flash Memory

- Supports data extraction from the flash memory of mobile phones or digital device heavily damaged by fire, water or external shock.

eMMC memory sockets (5 Types)

- BGA153 eMMC: 11.5x13x0.5mm
- BGA169 eMMC: 12x16x0.5mm
- BGA169 eMMC: 14x18x0.5mm
- BGA100 eMMC: 14x18x1.0mm (Option)
- BGA136 eMMC: 10x10x0.5mm (Option)

eMCP memory sockets (5 Types)

- BGA186 eMCP: 12x16x0.5mm
- BGA221 eMCP: 11.5x13x0.5mm
- BGA162 eMCP: 11.5x13x0.5mm (Option)
- BGA254 eMCP: 11.5x13x0.5mm (Option)
- BGA529 eMCP: 15x15x0.5mm (Option)

Universal SD memory card socket

- Supports SD Card, Mini SD Card, Micro SD Card

Selective Data Extraction

- Supports auto-scanning of partitions
- Supports extraction of selected partition

Excellent Extraction Performance

- Max. 12MB/sec extraction performance

Assurance of Evidence data integrity

- Supports write-protection of the evidence data
- Supports 10 hash algorithms such as MD5 and SHA256

Image File save using MD-NEXT

- Saves data as MDF image file with MD-NEXT software